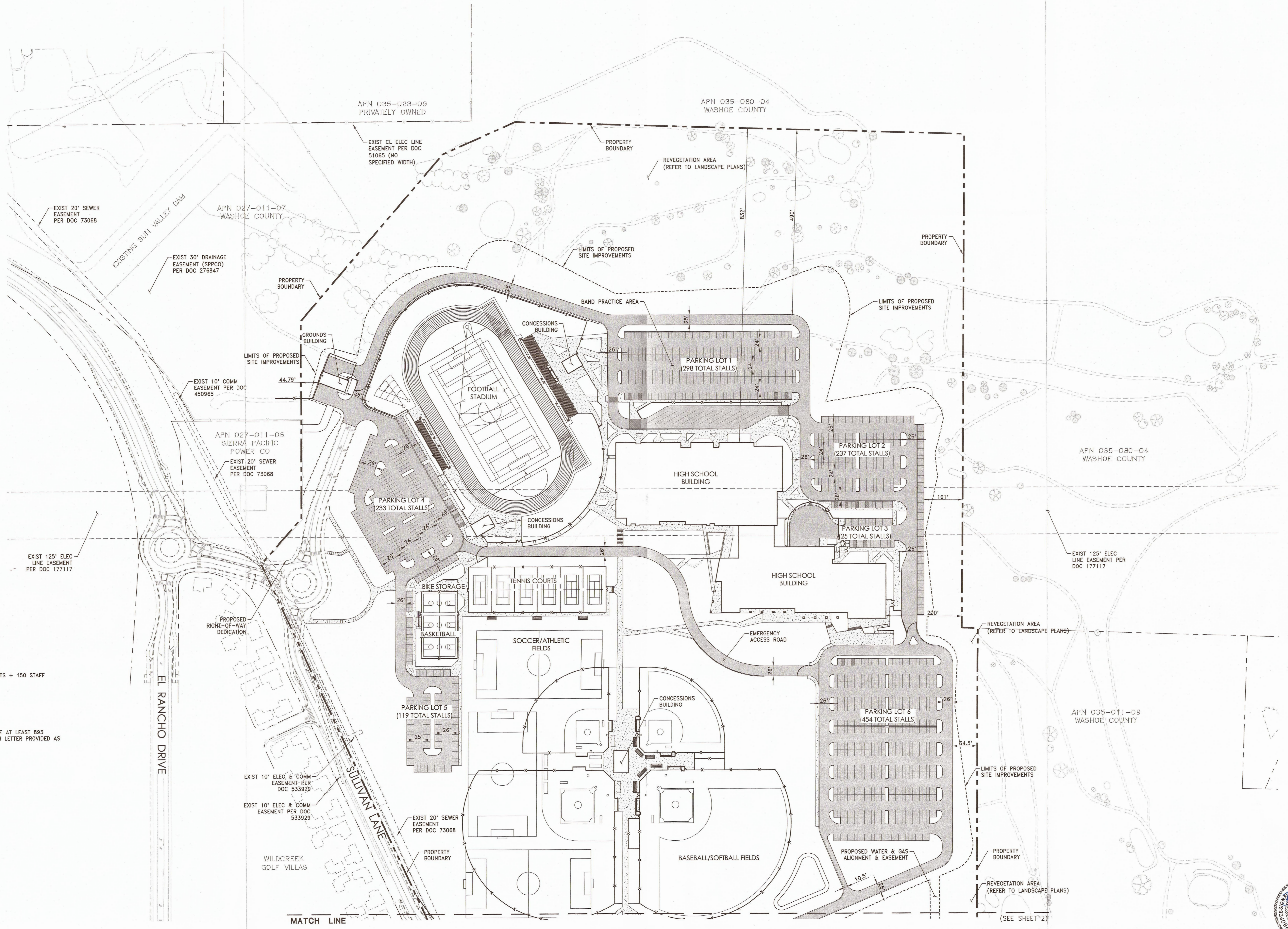




Exhibit 2



SITE STATISTICS

SITE AREA BREAKDOWN (APN 027-011-08)	
BUILDING COVERAGE	4 AC 5%
LANDSCAPE AREA	39 AC 45%
PAVED AREA	19 AC 22%
UNDEVELOPED AREA	24 AC 27%
PUBLIC RIGHT-OF-WAY	1 AC 1%
TOTAL	87 AC 100%

FLOOR AREA RATIO	
TOTAL FLOOR AREA	298,178 SF
NET SITE AREA	2,700,720 SF
FLOOR AREA RATIO	0.11

PARKING REQUIRED
 1 PER 1.5 STUDENTS & STAFF W/ 2,125 STUDENTS + 150 STAFF
 TOTAL REQUIRED PARKING = 1,517 SPACES

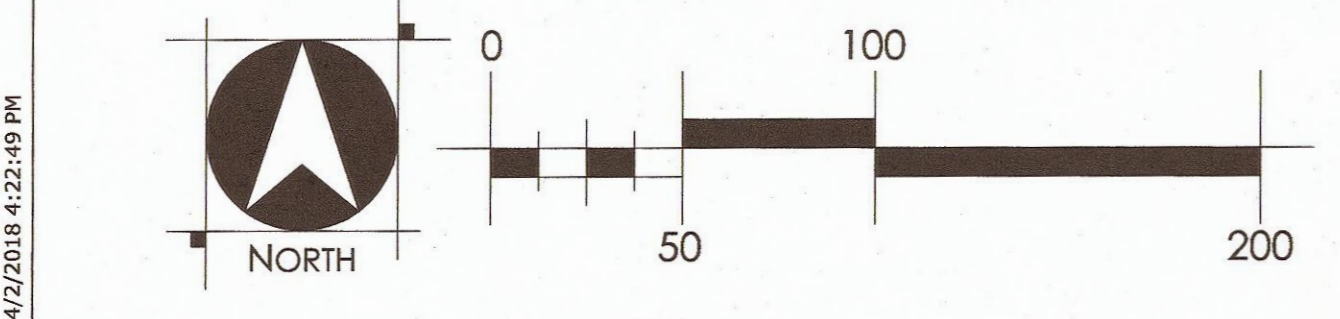
10% MINOR DEVIATION = 1,366 SPACES

PARKING PROVIDED
 TOTAL = 1,366 SPACES

NOTE: PARKING REDUCTION REQUESTED TO PROVIDE AT LEAST 893 SPACES. PLEASE REFER TO PARKING JUSTIFICATION LETTER PROVIDED AS PART OF DEVELOPMENT AGREEMENT SUBMITTAL.

LEGEND

	CONSTRUCT AC PAVEMENT
	CONSTRUCT CURB & GUTTER
	CONSTRUCT SIDEWALK



Development Agreement
 Site Submittal Package
PRELIMINARY
 Not For Construction

Professional Seal	Date	Revision

WOOD ROGERS
 BUILDING RELATIONSHIPS ONE PROJECT AT A TIME
 1981 Corporate Boulevard
 Reno, NV 89502
 Tel 775.823.4068
 Fax 775.823.4066

CUNNINGHAM GROUP
 Architects, Inc.
 3770 Howard Hughes Parkway
 Suite 100
 Las Vegas, NV 89169
 P 612-379-3400
 F 612-379-4400
 www.cunningham.com

H+K ARCHITECTS
 5485 Reno Corporate Drive, Suite 100
 Reno, Nevada 89511-2262
 P 775+332+6640
 F 775+332+6642
 hkarchitects.com

Wildcreek Area High School
Washoe County School District
 Sullivan Lane
 Sparks, Nevada 89431

SITE PLAN
 SHEET 1 OF 2
 02/20/2019
 H+K Project No: 1733



200.0 ft. Horiz. Scale
40.0 ft. Vert. Scale



BEGIN RELOCATION

EXISTING SWITCHING STATION

EXISTING LINE TO BE REMOVED
LENGTH = 3028 FT

END RELOCATION

PROPOSED 120kV LINE
LENGTH = 3963 FT

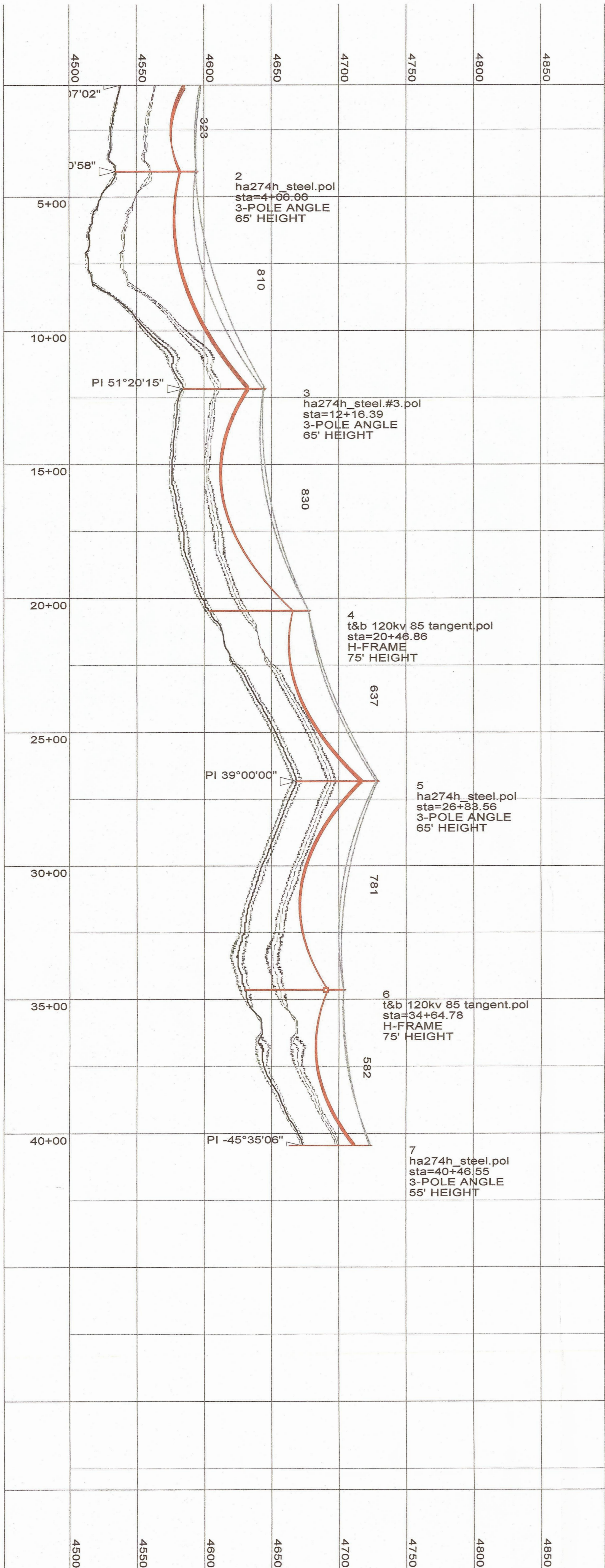
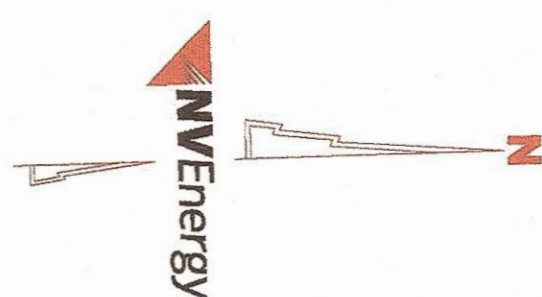


Exhibit 3

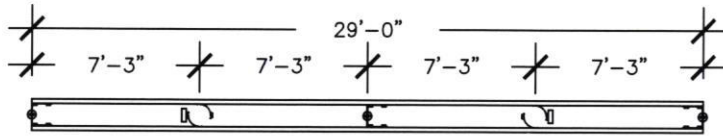
WILDCREEK
120kV LINE RELOCATION
PROPOSED - NOT FOR CONSTRUCTION



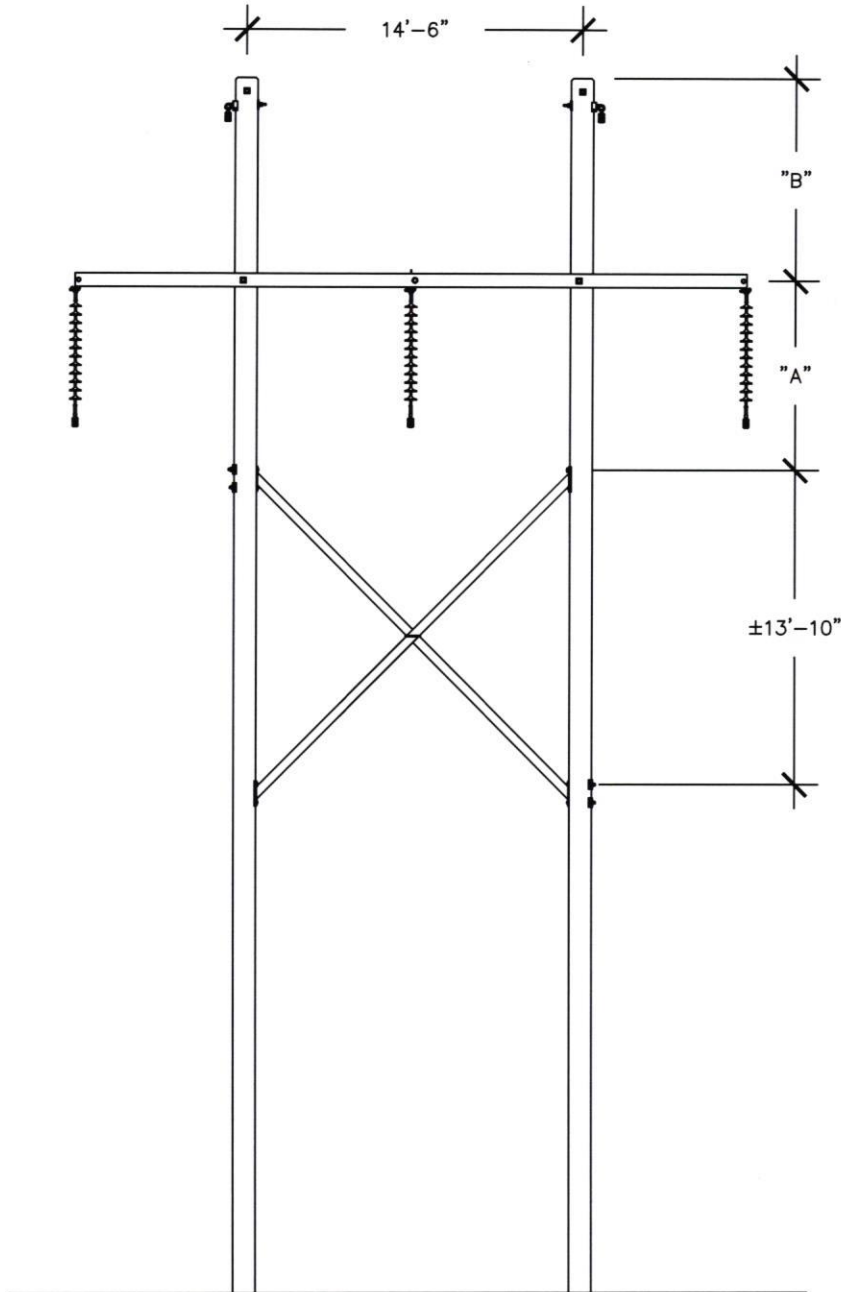
NO	DATE	DESCRIPTION	DWN	ENGR	APPR	PROJECT #
1	5/21/18	PLAN AND PROFILE	AFM	JAL		
2						
3						
4						
5						
6						
7						

DESIGN SUMMARY

SHIELD WIRE	-
CONDUCTOR	-
DESIGN L-G CLEAR	-
DESIGN LOADING	-
IN-SERVICE	-



TOP VIEW



ELEVATION

PERMITTING ONLY. NOT VALID FOR CONSTRUCTION.



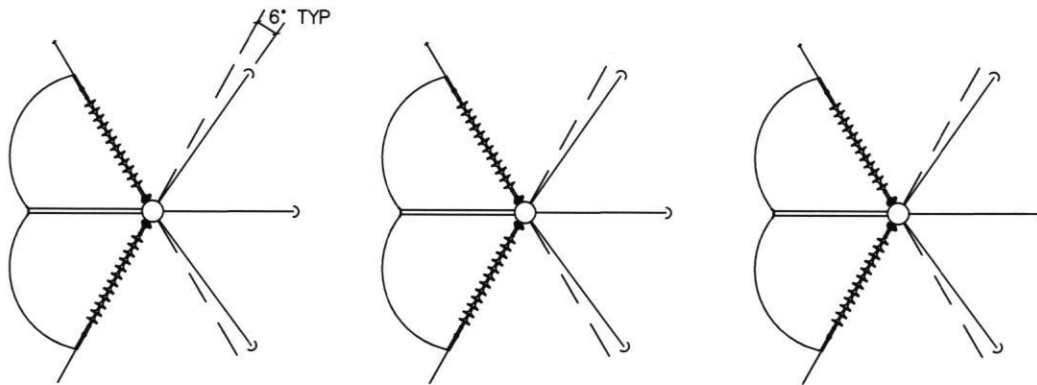
Volume 6: 120kV STRUCTURE STANDARDS

H-FRAME TANGENT W/DOUBLE TUBE ARM
& STATIC WIRE 14'-6" POLE SPACING
POLYMER

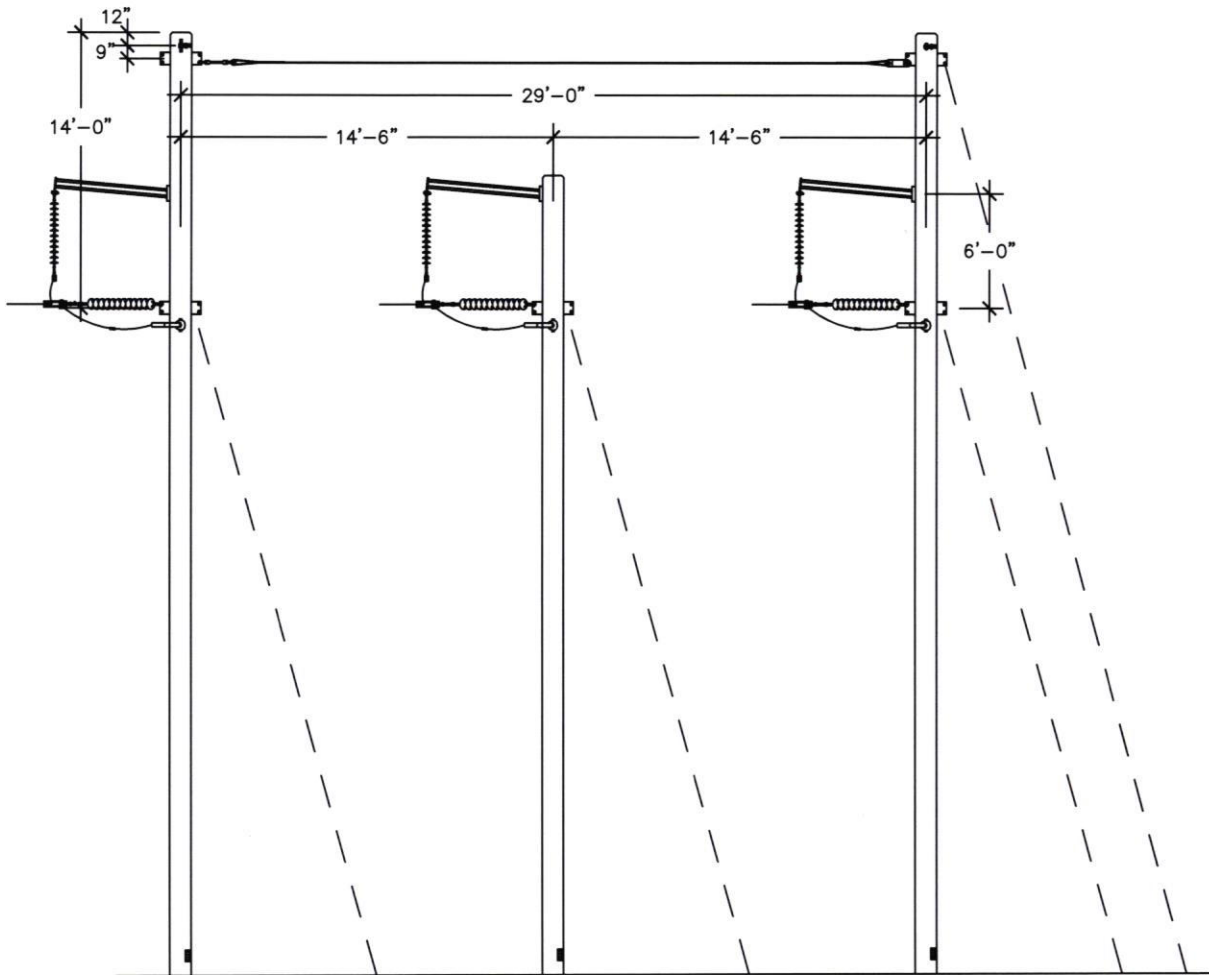
DT274H

DRAWN:	ENG:	APPR:	DATE:
AFM	JAL	--	02/2019

REVISION: 01
PAGE 1 OF 1



TOP VIEW



ELEVATION

PERMITTING ONLY. NOT VALID FOR CONSTRUCTION.



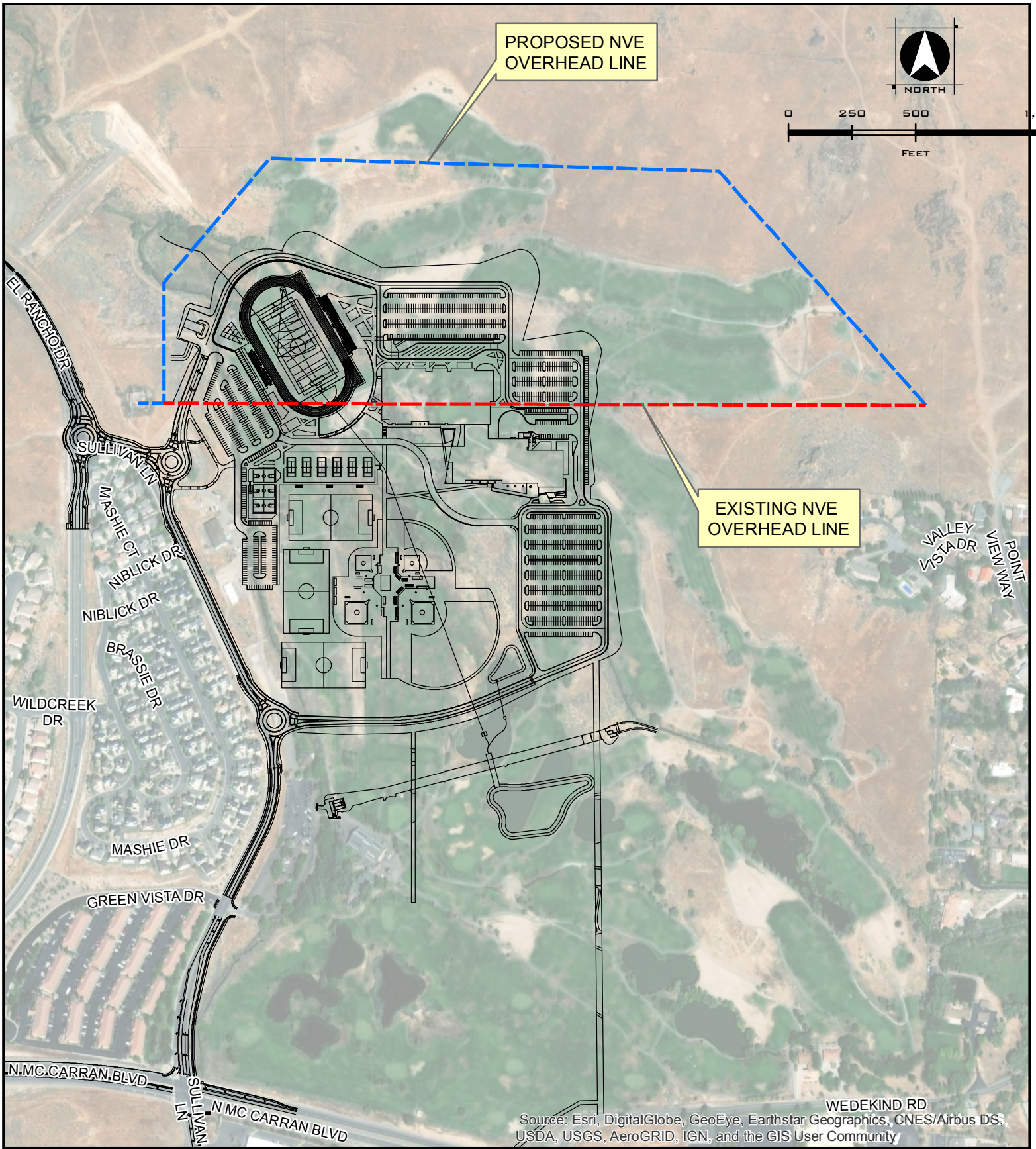
VOLUME 6: 120KV STRUCTURE STANDARDS

**3-POLE HEAVY ANGLE DEAD END
 $\frac{3}{8}$ " STEEL SHIELD WIRE
 STEEL POLES**

HA274H

DRAWN:	ENG:	APPR:	DATE:
AFM	JAL	--	02/2018

REVISION: 00
 PAGE 1 OF 1



Source: Esri, DigitalGlobe, GeoEye, Earthstar Geographics, CNES/Airbus DS, USDA, USGS, AeroGRID, IGN, and the GIS User Community



Washoe County School District
Every Child, By Name And Face, To Graduation™

NVE OVERHEAD LINE REALIGNMENT
HIGH SCHOOL AT WILDCREEK
SPARKS, NV
APRIL, 2019



WOOD RODGERS
BUILDING RELATIONSHIPS ONE PROJECT AT A TIME
1361 Corporate Boulevard Tel: 775.823.4068
Reno, NV 89502 Fax: 775.823.4066